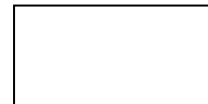


**FICHE D'OMOLOGATION
HOMOLOGATION FORM**



Motori Seven

Via Perticara 130
47023 Cesena (FC)
ITALY

Costruttore	Manufacturer	Motori Seven
Marca	Make	Motori Seven
Modello	Model	L6 A 50 cc
Tipo di ammissione	Inlet type	Reed Valve
Numero di pagine	Number of pages	16



FOTO DEL MOTORE
DRAWING OF ENGINE

Firma e Timbro
Signature and stamp

MOTORI SEVEN
di BENEDETTI OSCAR
Via Perticara, 130
47023 CESENA - FC
Part. IVA 03110790403



INFORMAZIONI TECNICHE		TECHNICAL INFORMATION	
A	CARATTERISTICHE	A	CHARACTERISTICS
			Tolérances
Volume del cilindro	<i>Volume of cylinder</i>	<u>49,81</u>	
Alesaggio d'origine	<i>Original Bore</i>	<u>39,85</u>	
Alesaggio teorico massimo	<i>Theoretical maximum bore</i>	<u>39,92</u>	
Corsa	<i>Stroke</i>	<u>39,95</u>	
Sistema di raffreddamento	<i>Cooling system</i>	<u>WATER COOLED</u>	
Numero carburatori	<i>Number of carburation systems</i>	<u>1</u>	
Numero dei canali di travaso	<i>Number of transfer ducts, cylinder/sump</i>	<u>5</u>	
Numero luci di scarico	<i>Number of exhaust ports / ducts</i>	<u>3</u>	
Forma della camera di combustione	<i>Shape of the combustion chamber</i>	<u>SPHERICAL-WITH SQUISH</u>	
Materiali della parete del cilindro	<i>Cylinder wall material</i>	<u>ALL.NIKASIL</u>	
Interasse biella	<i>Length between the axes of the connecting rod</i>	<u>92</u>	±0.1mm
Numero segmenti pistone	<i>Number of piston rings</i>	<u>1 o 2</u>	

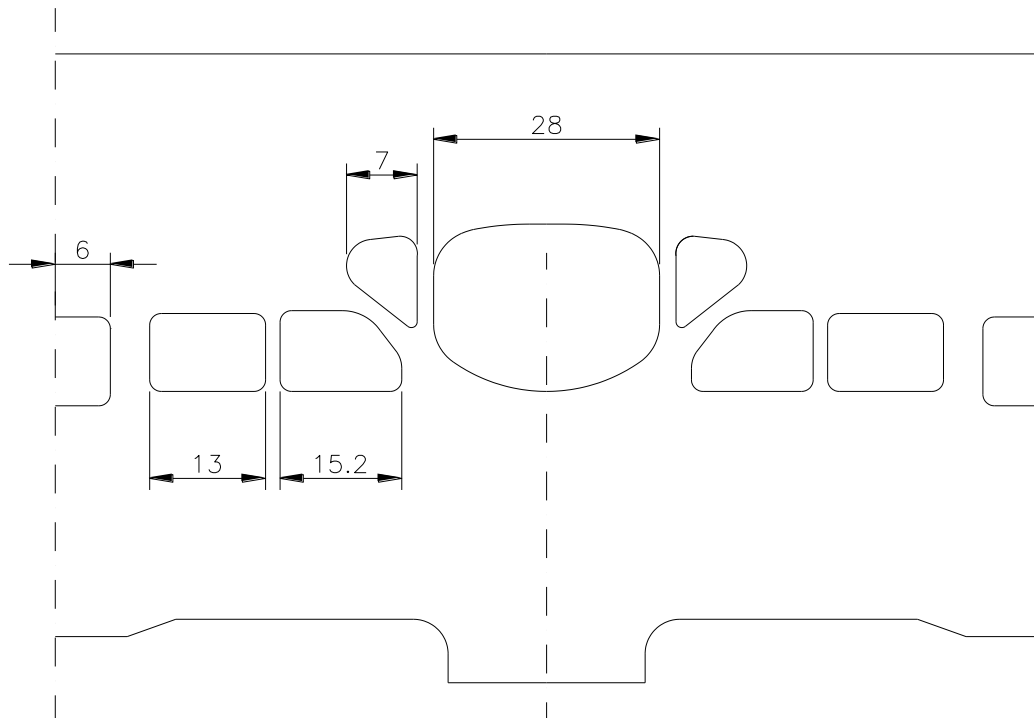
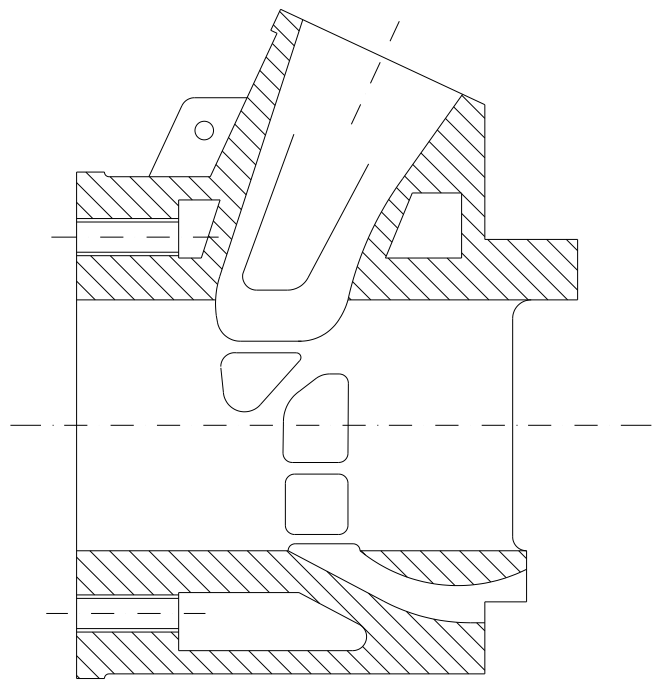
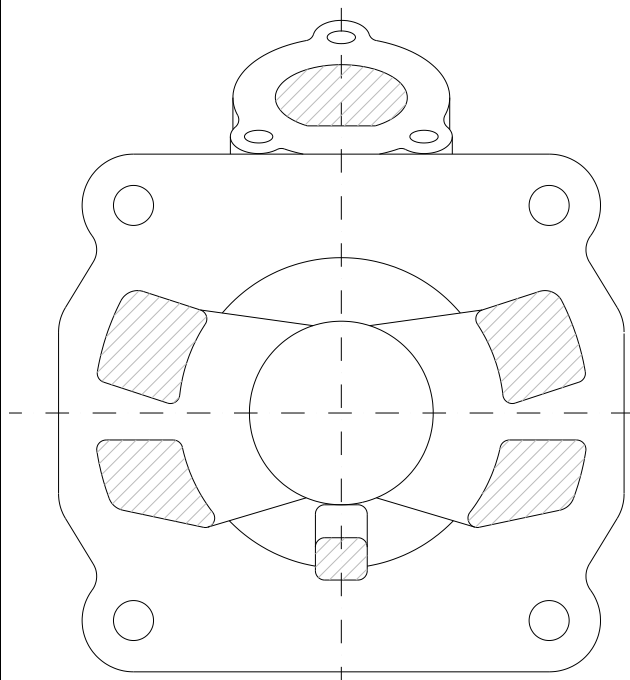
B	ANGOLO DI APERTURA SCARICO	B	OPENING ANGLES
Dello scarico	<i>Exhaust</i>	<u>199°</u>	Max

C	MATERIALI	C	MATERIAL
Cilindro	<i>Cylinder</i>	<u>AL-SI</u>	
Testa	<i>Cylinder head</i>	<u>AL-SI-CU</u>	
Carter	<i>Sump</i>	<u>AL-SI</u>	
Biella	<i>Connecting rod</i>	<u>STEEL NICRMO</u>	



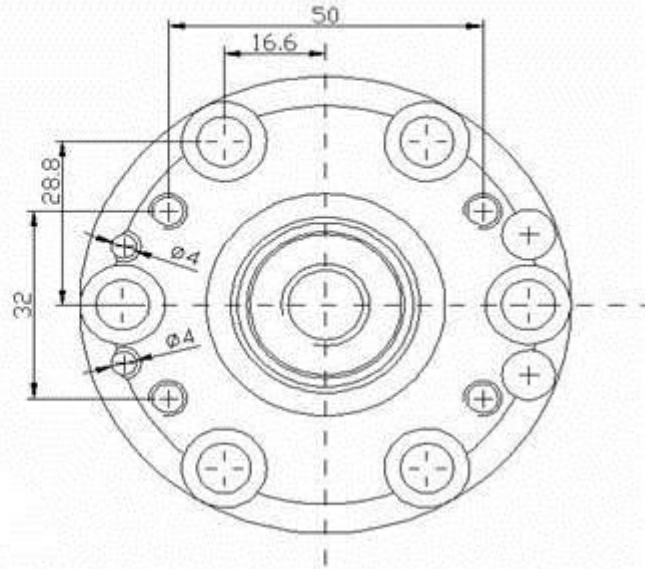
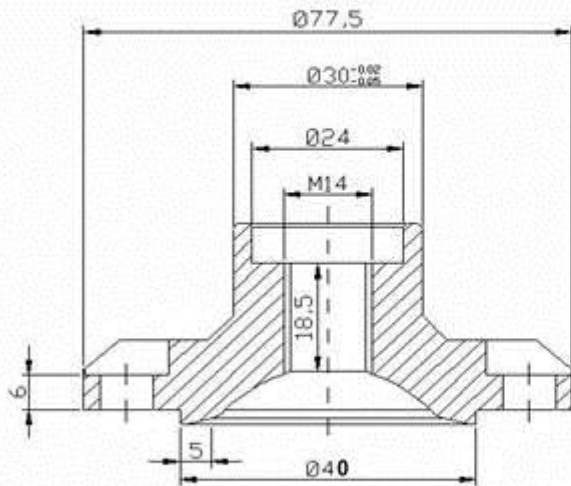
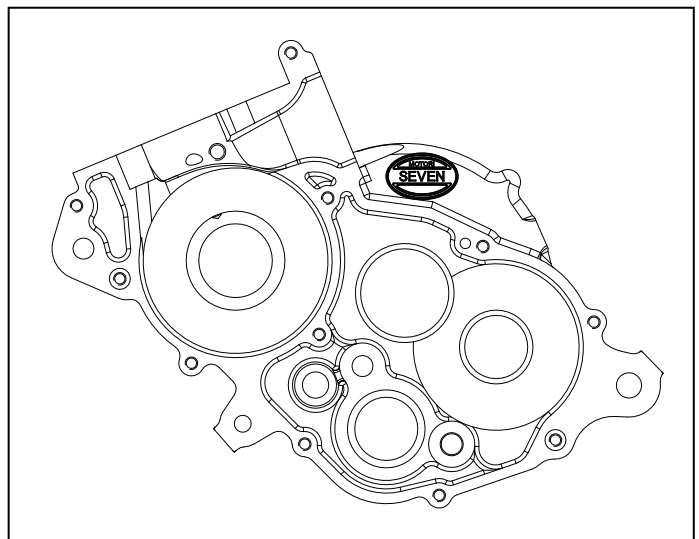
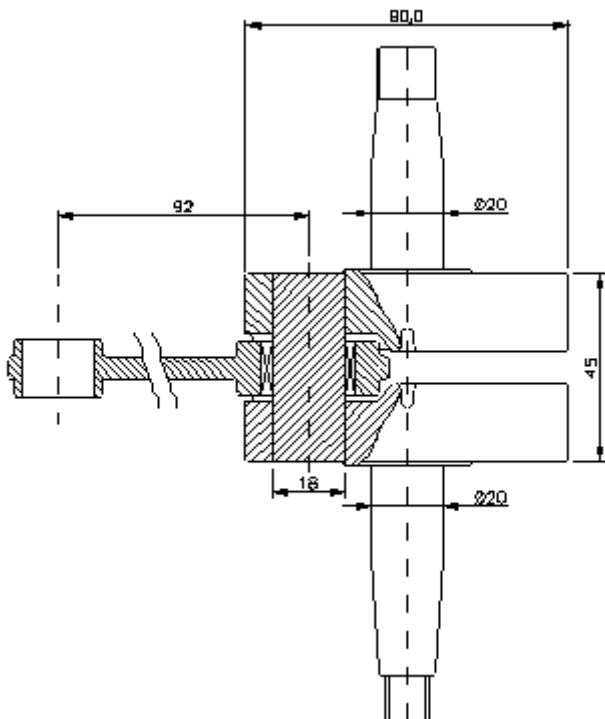
DISEGNO DELLO SVILUPPO DEL CILINDRO

DRAWING OF THE CYLINDER DEVELOPMENT

DISEGNO DELLA
BASE DEL CILINDRODRAWING OF THE
CYLINDER BASEVISTA SEZIONE DEL
CILINDROSECTION VIEW OF
CYLINDER



DISEGNO DELLA CAMERA DI COMBUSTIONE

DRAWING OF THE CYLINDER HEAD AND OF
THE COMBUSTION CHAMBERDISEGNO ALBERO
MOTORE*PESO = 1478 gr.*DISEGNO INTERNO
CARTERDRAWING OF THE
INSIDE OF SUMP

--









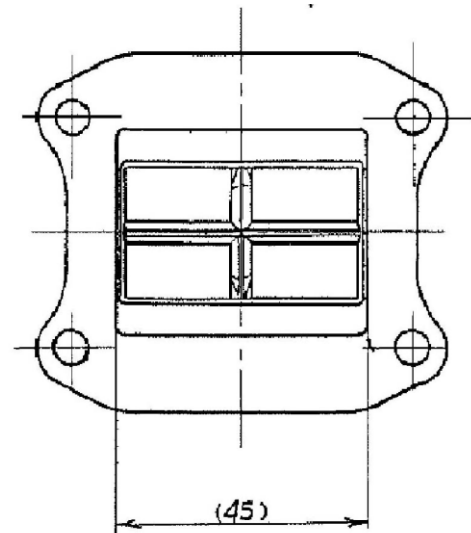
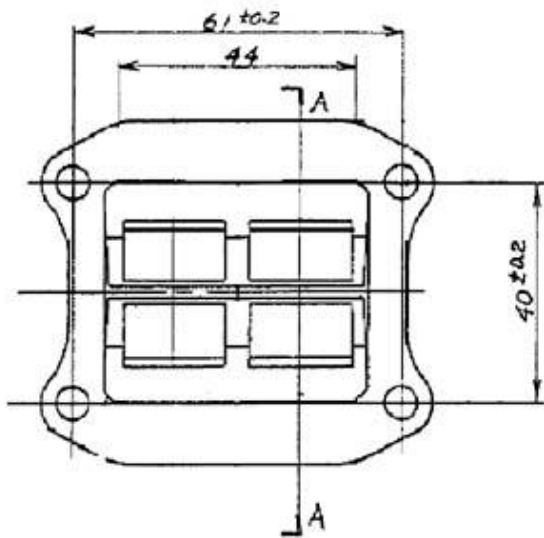
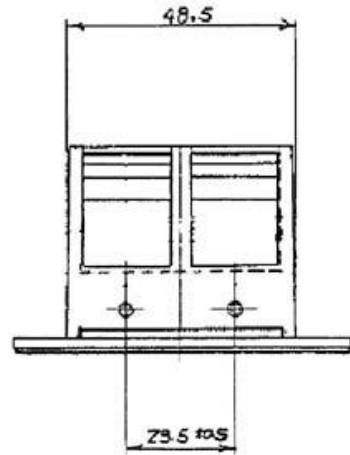
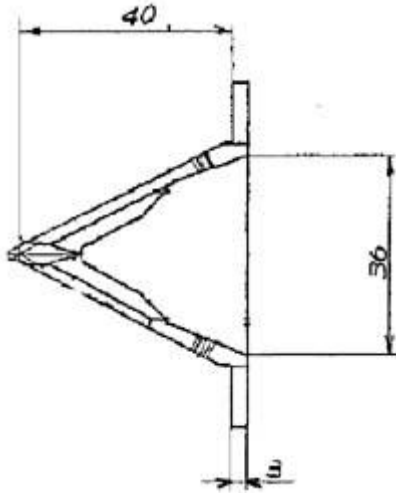
<p>FOTO DEL DIETRO DEL MOTORE</p>	<p><i>PHOTO OF THE BACK OF THE ENGINE</i></p>	<p>FOTO DEL DAVANTI DEL MOTORE</p>	<p><i>PHOTO OF THE FRONT OF ENGINE</i></p>
			
<p>FOTO DEL MOTORE PARTE SUPERIORE</p>	<p><i>PHOTO OF THE ENGINE TAKEN FROM ABOVE</i></p>	<p>FOTO DEL MOTORE PARTE INFERIORE</p>	<p><i>PHOTO OF THE ENGINE TAKEN FROM BELOW</i></p>
			

FOTO DEL PIEDE DEL CILINDRO	PHOTO OF THE BASE OF THE CYLINDER	FOTO DELLA CAMERA DI COMBUSTIONE	PHOTO OF COMBUSTION CHAMBER
			
FOTO CARTER (VISTA TRE QUARTI)	PHOTO OF THE SUMP (GASKET FACE)	FOTO DI UNA PARTE INTERNA DEL CARTER	PHOTO OF AN INTERNAL PART OF THE SUMP
			



IGNITION

Manufacturer PVL ad anticipo fisso

bobina analogica omologata cik fia

PHOTO OF IGNITION

PHOTO OF COIL



(insert photo here)

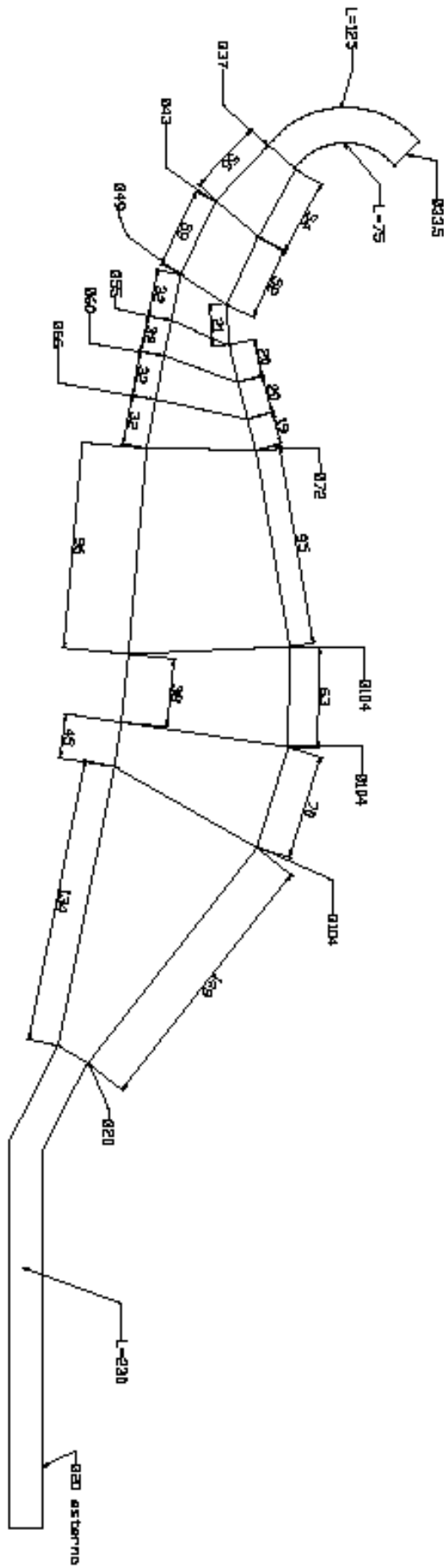
(Insert photo here)



--


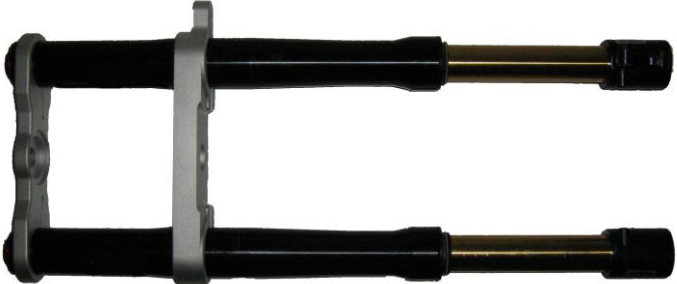
CAMBIO DI VELOCITA		GEARBOX	
Coppia primaria		<i>Primary coupling</i>	<u>64-18</u>
Rapporti del cambio		<i>Gearbox ratios</i>	
<i>Marcia</i>	<i>Albero primario</i>	<i>Albero secondario</i>	
<i>Gear</i>	<i>Primary shaft</i>	<i>Secondary shaft</i>	
1 ^{ere} /1 st	<u>14</u>	<u>35</u>	
2 ^e /2 nd	<u>17</u>	<u>32</u>	
3 ^e /3 rd	<u>18</u>	<u>27</u>	
4 ^e /4 th	<u>21</u>	<u>27</u>	
5 ^e /5 th	<u>21</u>	<u>24</u>	
6 ^e /6 th	<u>22</u>	<u>23</u>	



FOTO DELLO SCARICO	PHOTOS OF THE EXHAUST
	



MOTORI SEVEN



SUSPENSION	
Manufacturer EXTREME TECH	Manufacturer MARZOCCHI
PHOTO OF BACK SUSPENSION	PHOTO OF FRONT SUSPENSION
	

WHEEL	
Manufacturer SEVEN	
PHOTO OF BACK WHEEL <i>(insert photo here)</i>	PHOTO OF FRONT WHEEL <i>(Insert photo here)</i>
	

--

DISEGNO DEL TELAIO

DRAW OF THE CHASSIS

FOTO MOTO CON CARENA LATO DESTRO

PHOTO OF THE MOTORBIKE RIGHT SIDE



FOTO MOTO CON CARENA LATO SINISTRO

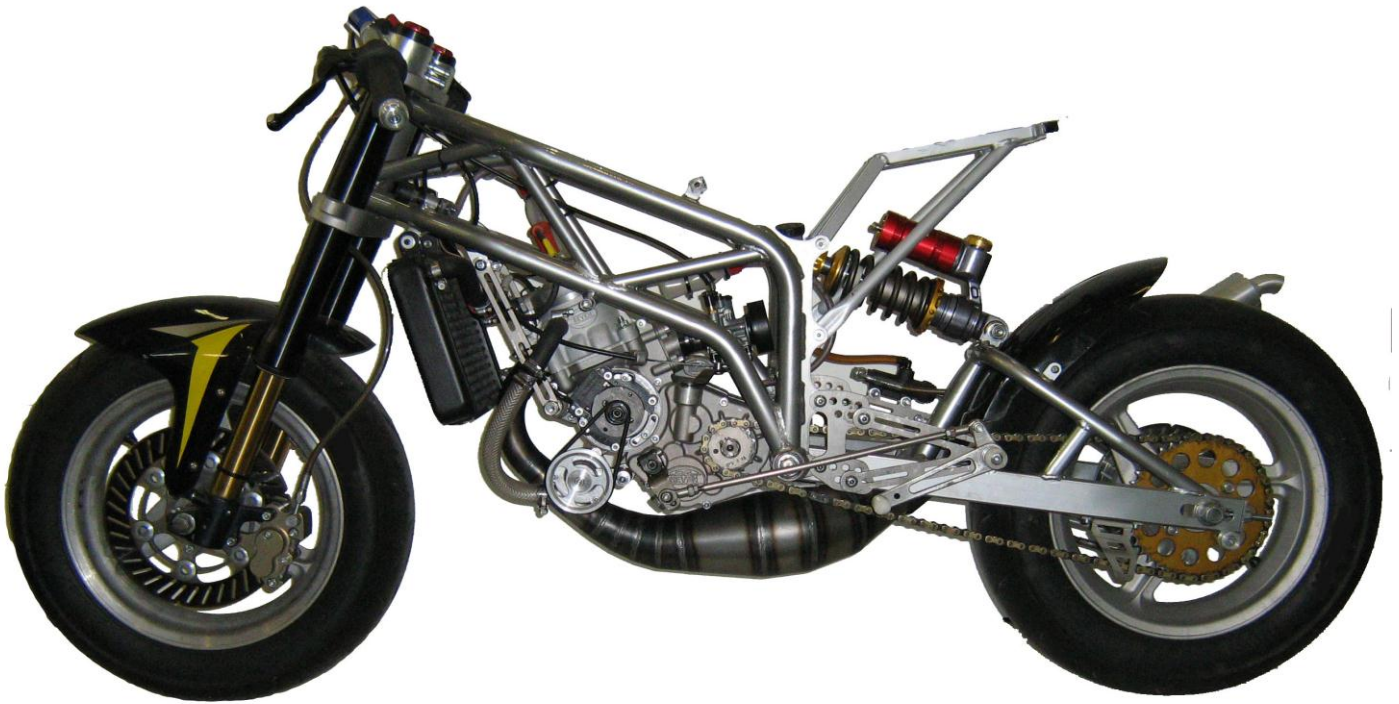
PHOTO OF MOTOBIKE LEFT SIDE



--

FOTO MOTO LATO SINISTRO

PHOTO OF MOTOBIKE LEFT SIDE



--

FOTO MOTO LATO DESTRO

PHOTO OF MOTOBIKE RIGHT SIDE

